

## SCLATRIC

### Applications

- 1,LTE Small &Base Station
- 2,DAS,PICO
- 3,GNSS Antenna

### Features

- 1,Package BGA-5
- 2,Low insertion loss
- 3,High Rejection

### Description

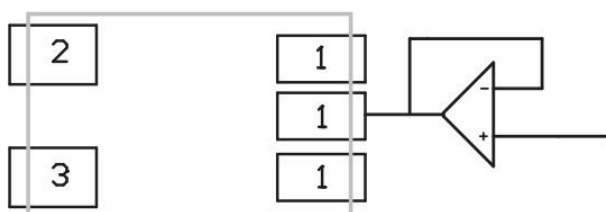
STC2501A is a filter for GNSS antenna,which is designed with BAW technology.The product can provide low insertion loss and rejection.The typical insertion loss in the pass band is less than 1.5dB.The STC2501A uses advanced module packing techniques .

### Electrical Specification

Characteristic	Minimum	Typical	Maximum	Units
Insertion Loss(1166~1278 MHz)		1.0	2	dB
Ripple(1166~1278 MHz)			1.2	dB
VSWR(1166~1278 MHz)			2	
Absolute Attenuation				
10~960 MHz	35			dB
1525~1605MH	36			dB
2170~2370 MH	38			dB
2400~2483 MH	40			dB
2515~2675 MH	40			dB
Operating Temp.	-40		125	°C
Input Power			32	dBm

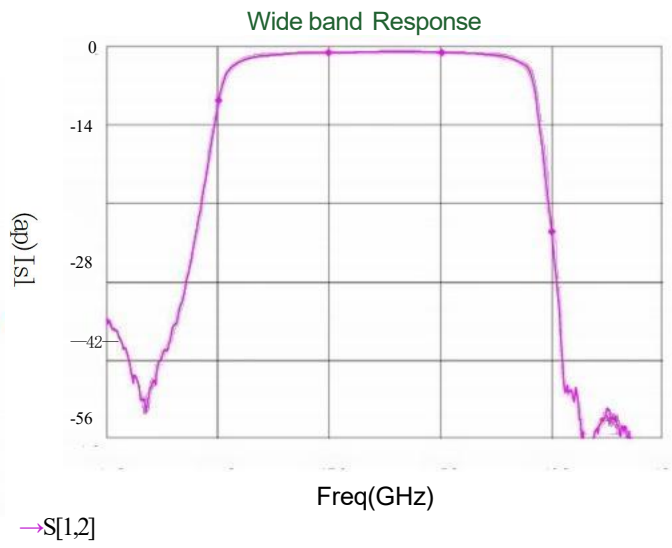
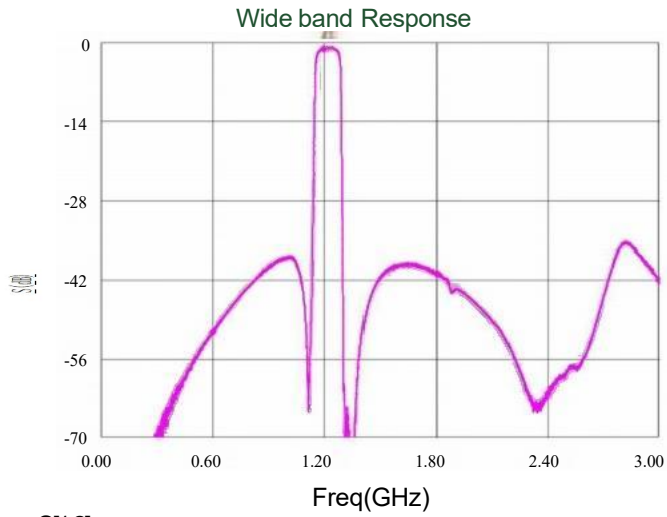
All the above data are based on specified demo board and tested in 25° environment.

### Pin Configuration



Pin No.	Label
1	IN
2	GND
3	OUT

Typical Performance(Temp=+25°C)

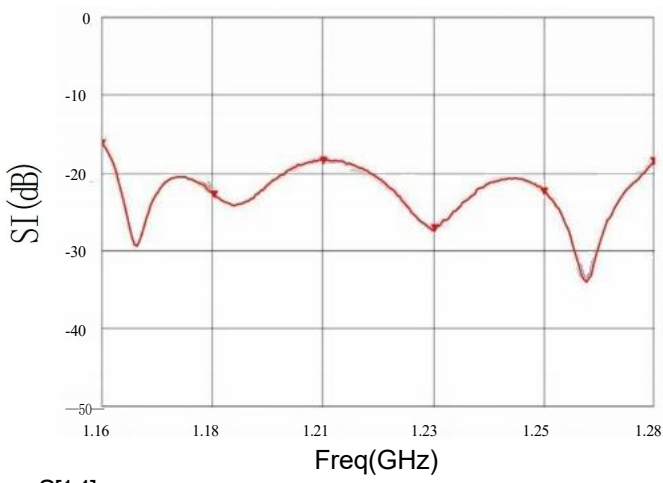


→S<sub>1,2</sub>

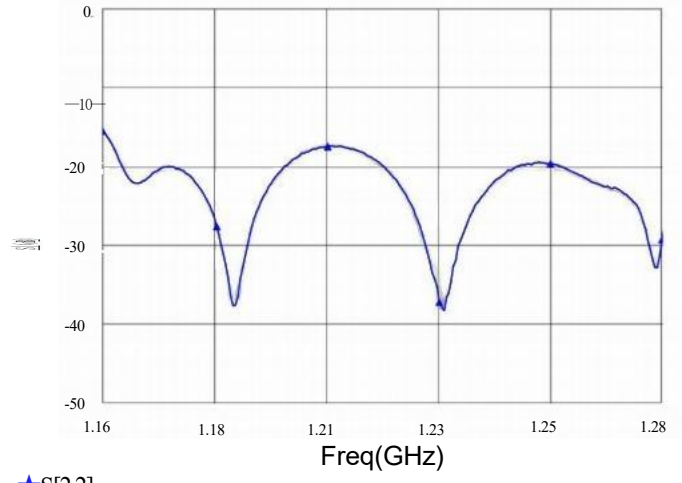


→S<sub>1,2</sub>

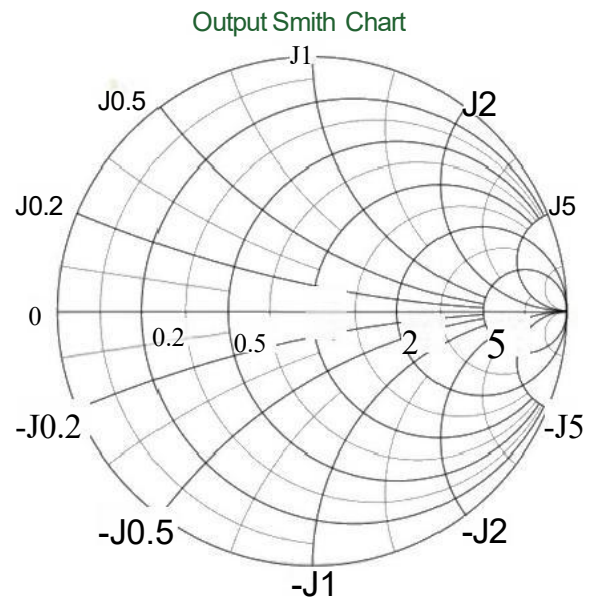
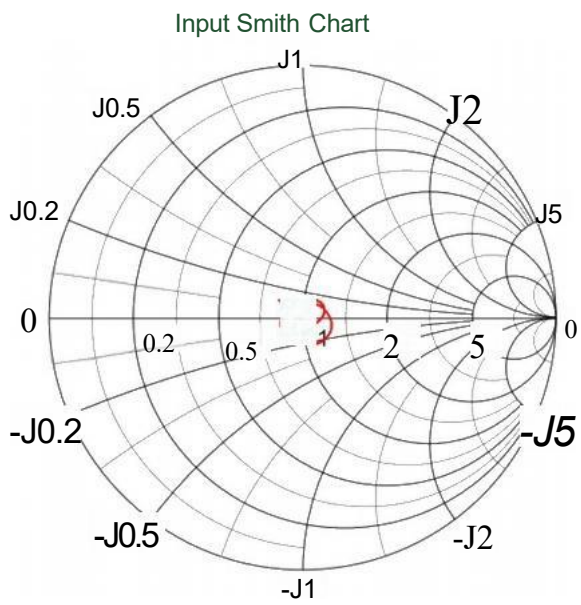
Input Return Loss



$S_{11}$



$S_{22}$



Packaging and Ordering Information

Figure 9.STC2501A Packaging Specifications

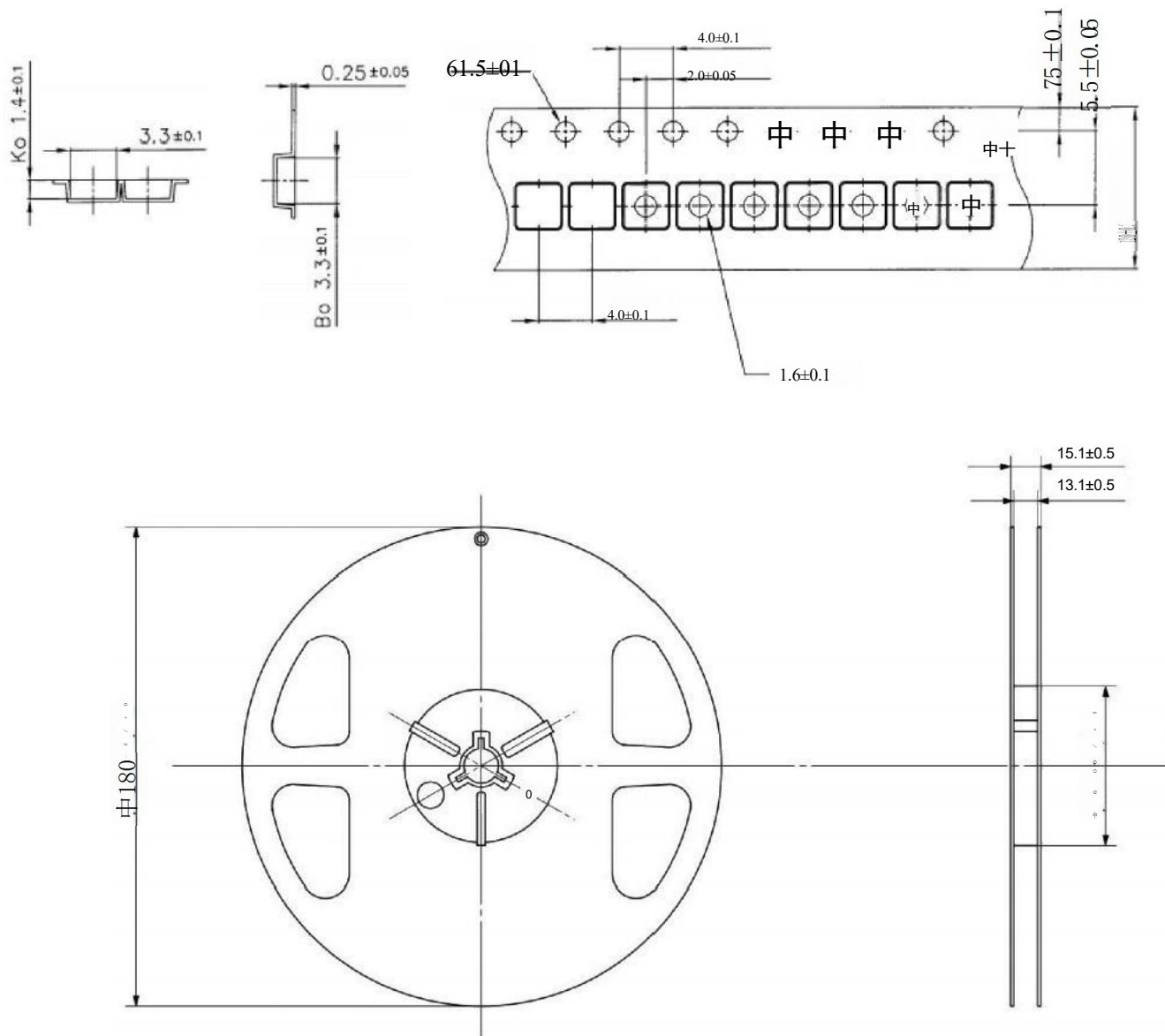
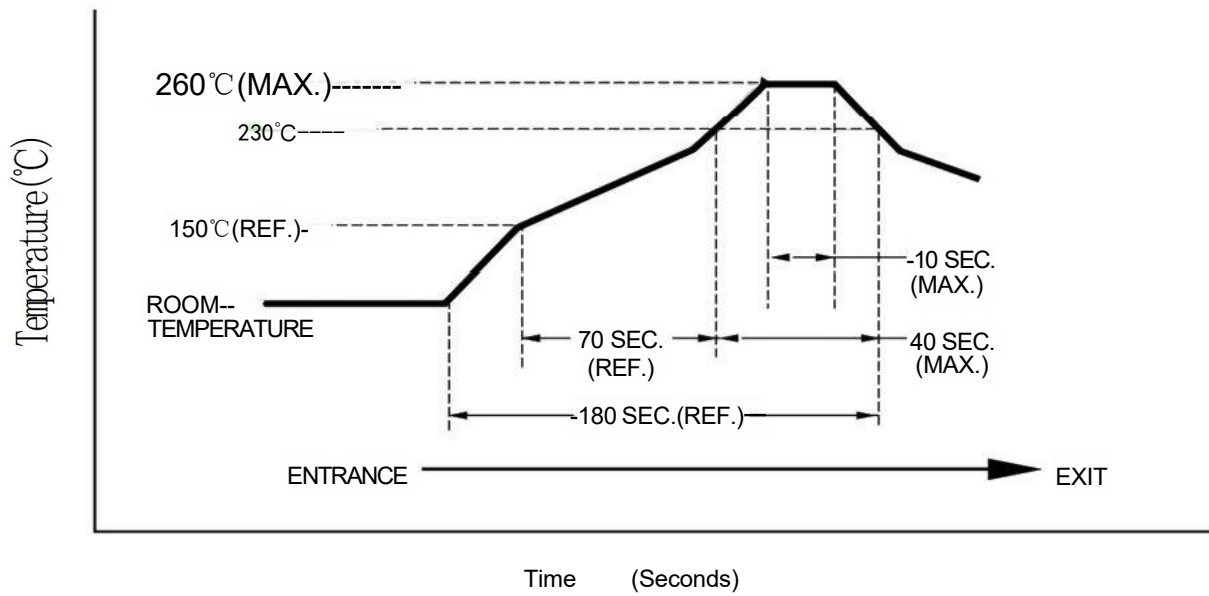


Table 2.MPD1020W2 Ordering Information

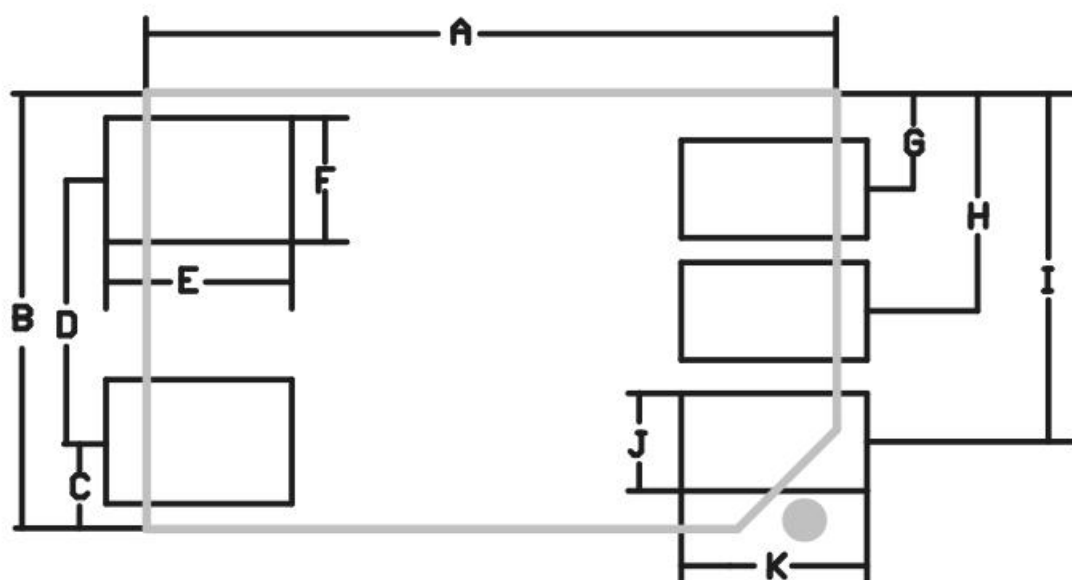
Device	Package	Reel	Shipping
STC2501A	BGA-6	7"	2000/Reel

## Recommended Reflow Solder Profile

Figure 10. STC2501A Recommended Reflow Solder Profile



## Package Outline:5-Pin BGA



Dim	Min	Typ	Max
A	7.8	7.9	8
B	4.9	5	5.1
C	/	0.965	/
D	/	3	/
E	2	2.13	2.3
F	1.35	1.422	1.5
G	/	1.093	/
H	/	2.49	/
I	/	4	/
J	1	1.12	1.2
K	2	2.135	2.3
All Dimensions in mm			